



Why to Choose ACH for your Public Cloud Requirements





Table of Contents

Title	Page
1. Move your business to our public cloud	1-5
2. Cloud crafted with cutting-edge technology: OpenStack and Ceph	6-9
3. Flexible and economical pricing model	10
4. Cost comparison with other brands	11
5. Why choose ACE for your business?	12

Move your business to our public cloud

Ace Cloud Hosting (ACE) is an application hosting provider headquartered in Florida, USA. Being a winner of various prestigious awards from esteemed organizations, ACE is renowned for its hosting services in diverse industries like accounting, construction, real estate, legal, and several others and takes pride in being an Intuit Authorized Commercial host and QuickBooks solution provider. ACE offers a wide range of best-in-class cloud solutions including managed server hosting, private server hosting, application hosting and Desktop as a Service (DaaS), among others, which help customers achieve their business objectives.

Our mission has always been to offer customers the freedom to build their most ambitious projects in a secure, compliant, and sustainable cloud environment by providing them with high-performance, cost-effective services for managing, protecting, and scaling up their data.

Our aim is to offer our public cloud services across the globe, boost employment opportunities and increase our customer base worldwide.

As per a report by [Gartner](#), the public cloud market is forecasted to grow at a rate of 20.4% to reach \$494.7 billion by the end of 2022 (from \$410.9 billion in 2021) and \$600 billion in 2023.

We are providing public cloud services to give you the advantage of focusing on your core business and reduce your TCO (Total Cost of Ownership), while we maintain all your hardware, configurations for different servers, technical requirements, processor maintenance (CPU), RAM and storage devices. We have established 6 data centers across the globe for public cloud to benefit businesses of all levels across the globe in numerous ways.

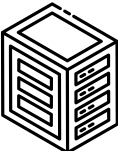
Here are 7 best reasons why you should consider moving to ACE public cloud:


- Save IT infrastructure setup cost
- Pay as per usage
- Get free DDoS protection
- Assured 99.99% uptime SLA
- Get IPv6 support
- Ensure faster availability
- Gain secured cloud access

ACE public cloud caters to your business needs by offering services like:

- **Compute** - ACE offers excellent processing power, memory, networking, storage, and other resources required for the computational success of any program.
 - a. **CPU Intensive** - We offer high compute power for extreme CPU usage tasks like software development and production, high-resolution movies, video stream hosting and broadcasting purposes. We use top of the line AMD EPYC CPUs and offer multiple vCPU flavors as per your needs.
 - b. **RAM Intensive** - We provide higher RAM for tasks that need more memory to function faster and prove to be a boon for high-resolution media editing, rendering and 3D art designing work.
 - c. **Cloud GPU** - For GPU intensive applications like training ML models, neural networks and rendering ultra HD media and graphics, we offer powerful, energy-efficient, and dedicated high-end NVIDIAs driven Tesla A2 GPU, providing an advanced computing platform for data centers, HPC, and AI.
 - Virtual workstation (NVIDIA RTX 8000 and RTX A6000 GPUs)
 - AI/ML (NVIDIA A2, A100 and V100 GPUs)

- **Storage** - We offer block storage to our customers and then split their critical data into multiple locations, to ease the process of data backup and recovery in case of an unpredictable disaster. Our storage services are ideal for high-performance computing.
 - We provide S3 compatible object storage and block storage services based on Non-Volatile Memory Express (NVMe), SSD and magnetic storage for seamless data.
 - We use NVMe (a communication interface and driver that defines the command) feature set of PCIe-based SSD to improve the performance, interoperability and efficiency of your system.
 - You may choose between SSD and magnetic disks, where the former offers fast performance and speed.
- **Network** - We provide network connectivity to commercial ISPs as well as to large organizations and provide the below-mentioned specialized network features. Easily host high traffic applications, segregate data, increase business availability and effectively manage peak loads using our network services.
 - **Private Network** - We provide a flexible and secure private network for your organization and LANs.
 - **Public Network** - Use our public network to deploy a data network that allows for data transmission to the public.
 - **Floating IP** - We give floating IP services (a public routable address used in a private subnet) which assign a dynamic identity to your instance in order to distribute traffic evenly across all nodes.
 - **Virtual Router** - We offer virtual router service to help support multiple virtual networks according to your need so they can exist on the same physical network.
 - **Load Balancer** - We offer load balancer to help avoid uneven overloading of compute nodes and distribute incoming traffic to multiple application nodes.

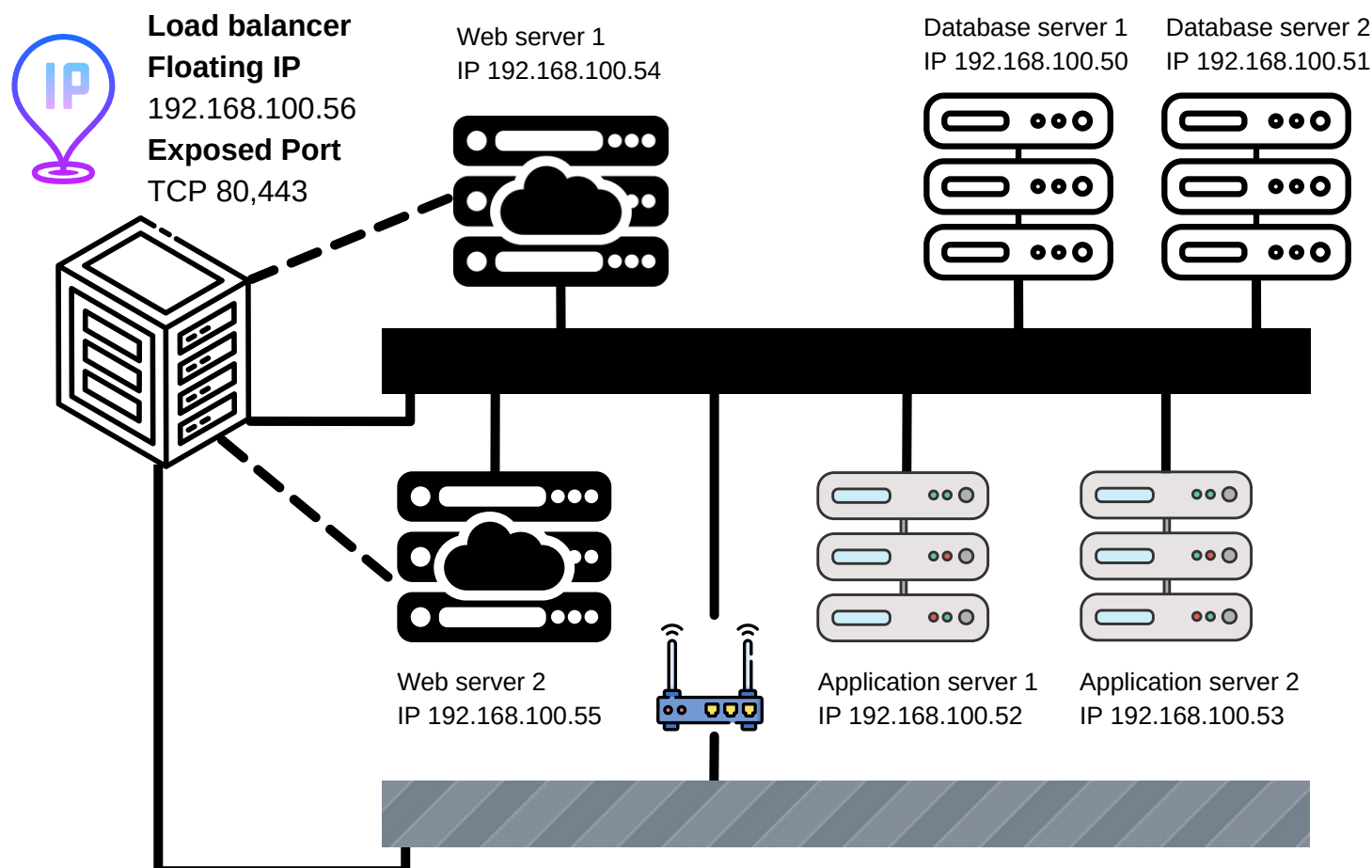
Load balancer - 

Floating IP - 

Private network - 

Public network - 

Virtual Router - 



How network components function:

1. Various types of servers are connected to the private network.
2. The load balancer is connected to web servers, public networks, and private network.
3. The public network is connected to a private network via a virtual router.
4. A load balancer acts as a traffic cop between the incoming load on the server and diverts the vehicles to balance the load on the servers. The load balancer distributes requests into the relevant servers to reduce the incoming load on the servers.
5. IP hashing method comes into play in which the IP address of the client is used to determine which server receives the request.

- **DBaaS** - We help manage your database infrastructure, its deployment, scalability, and back-up for you with our Database as a Service (DBaaS) offering. DBaaS is perfect for:
 - E-commerce platforms, where a large number of transactions take place at the same time.
 - Business intelligence and data analytics, where humongous data needs to be stored and processed.
 - Provision databases for deploying applications in a matter of minutes.

- **FWaaS** - Secure your work from internet blackouts to make surveillance-rich architecture with our PCI-DSS certified services using Firewall as a Service (FWaaS).
 - Leverage network traffic control, gain endpoint insights, deploy firewalls with policies to protect your VPN along with third-party firewalls.
 - ACE Bring Your Own License (BYOL) service allows clients to use on-premises software licenses to have a similar and highly automated IaaS experience.
 - Keep applications safe using automated security that filters out malicious threats.
 - Prevent hackers from gaining unauthorized access to your organizations data, emails, and systems.

- **License** - Get dedicated access to the RDS CAL license from ACE to speed up your remote desktop deployment, it is useful for hosting session-based desktops and pooled virtual machines, provide platform-agnostic services with faster application deployment. You need an RDS CAL license to host your virtual machines, though you can test for a given grace period of 120 days. You will need a valid CAL license from a registered license provider to log on to the RDS host server. You may get an ACH CAL to connect and incorporate the remote desktop session role functionality into the Windows server. With the flexibility of a single interface, you can keep the vital intellectual property safe and ease regulatory compliance while working remotely.

Cloud crafted with cutting-edge technology

We leverage the market leading and widely used platform- OpenStack in the public cloud segment. For operating storage, we use Ceph which is in itself the most preferred storage option in the industry as it is highly scalable, easily available, and most economical. As these technologies are being massively used in the cloud industry, they allow easy movement of resources. For instance, when you are changing cloud service providers, it allows you to effortlessly switch providers without facing any compatibility issues.

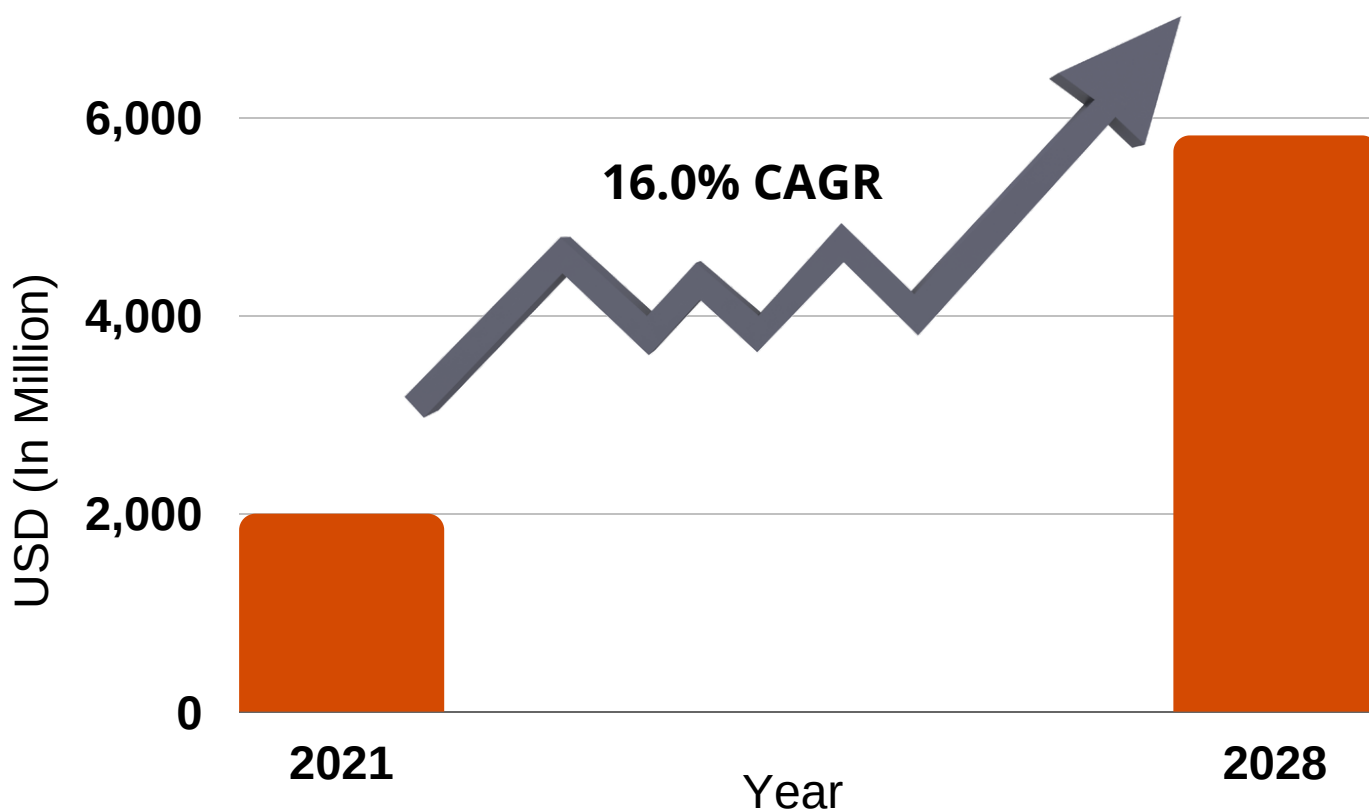


OpenStack

Our public cloud service is powered by OpenStack, the most trusted and widely used platform in the industry. It is a collection of software modules and tools that provides a framework to create and manage both public cloud and private cloud infrastructure. It delivers Infrastructure-as-a-Service (IaaS) functionality by pooling, provisioning, and managing large concentrations of computing, storage, and network resources. These resources, which include bare-metal hardware, virtual machines (VMs), and containers, are managed through Application Programming Interfaces (APIs) as well as through its dashboard. Other OpenStack components provide orchestration, fault management, and services intended to support reliable, and high availability operations.

OpenStack has been widely adopted across the IT community due to its innovation and robustness. It is a constantly evolving platform for the creation of highly available, easily managed cloud services. OpenStack global community includes more than hundreds of thousands of individual members and 250 supporting organizations spanning 130+ countries worldwide.

As per a report by MarketWatch, the global Cloud Management for the OpenStack market size is projected to reach USD 5815.1 million by 2028, from USD 1991.1 million in 2021, at a CAGR of 16.0% during 2022-2028.



Not only this, but various IT giants have also succeeded in providing OpenStack-powered public and private cloud to customers worldwide.

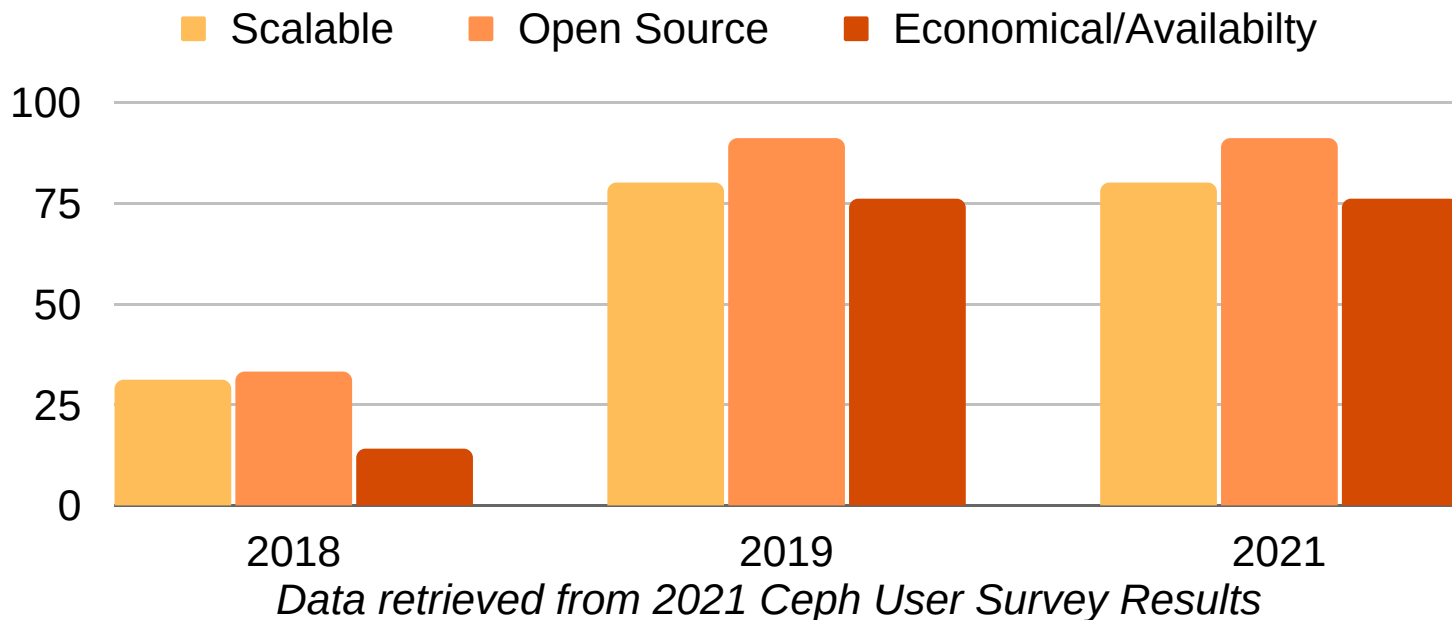
We picked OpenStack for the following benefits, keeping in mind the resilient and dependable services these service providers provide:

- **Top-notch industry support** - OpenStack was founded in 2010 as a framework for allowing enterprises to deliver free and open-source cloud computing services using commodity hardware. Since its establishment, major IT giants have promised their support and invested in its growth, resulting in its ever growing robust developer community.
- **Compatible** - OpenStack APIs are built to work with public cloud systems, implying IaaS client applications can be easily ported from other cloud platforms to OpenStack-based public cloud providers.
- **Scalable** - Enterprises may benefit from the scalability of OpenStack public clouds, since it is a technology that can scale up massively, giving businesses the ability to quickly spin up and down servers.
- **Highly secure** - Securing an OpenStack cloud is similar to securing any other type of IT infrastructure. It necessitates a diverse collection of tools and abilities, as well as a thorough grasp of security. Role-based access restrictions in OpenStack can provide a high degree of security.
- **Easy to access control panel** - OpenStack features an easily accessible control panel that gives visibility, control, and quick access to power management capabilities, giving customers the ability to monitor and control their cloud services easily, giving a clear picture of resource utilisation and presently running VM instances.

Ceph

Ceph is a storage solution that is made to allow file, block and object storage in a single system. It takes care of outages, is scalable, operates on commodity hardware, and is built primarily for business applications requiring entirely distributed operations with no single point of failure. Its major advantage is that it is fault-tolerant because of its data replication feature, ensuring smooth functioning of existing processes.

Here are top 3 reasons why users prefer Ceph*:



*- Data for the year **2020** not available

A recent survey by [the Ceph Foundation](#) showed that commercial segments represent the overwhelming majority of Ceph use cases, at 64% over the last three years.

We leveraged Ceph technology for our public cloud because of the following benefits it provides:

- **Easy adoption** - Making the switch to software-defined storage solutions might be challenging at times, however, Ceph addresses this issue by permitting both block and object storage inside the same cluster, so that you don't worry about managing storage services with different APIs or technologies.
- **Highly available and better performance** - You get increased availability and performance due to the coding erasure feature, which adds robustness and longevity to the data.
- **Cost effectiveness** - Ceph works on everyday hardware too, therefore there's no need for pricey or additional gear. The pay-as-you-go nature of a public cloud also adds to overall cost control.
- **Improved security** - Ceph's LDAP, Active Directory (AD) integration, encryption capabilities, and other features ensure security and help limit unauthorised access to the system.

Flexible and economical pricing model

Starting at only \$30/month, we are providing market-disrupting prices to our customers while offering them the same set of resources and services as our competitors. We offer one flat pricing across all our data centers irrespective of the locations and give a secure pricing model where you only pay as much as you use with our flexible billing model.



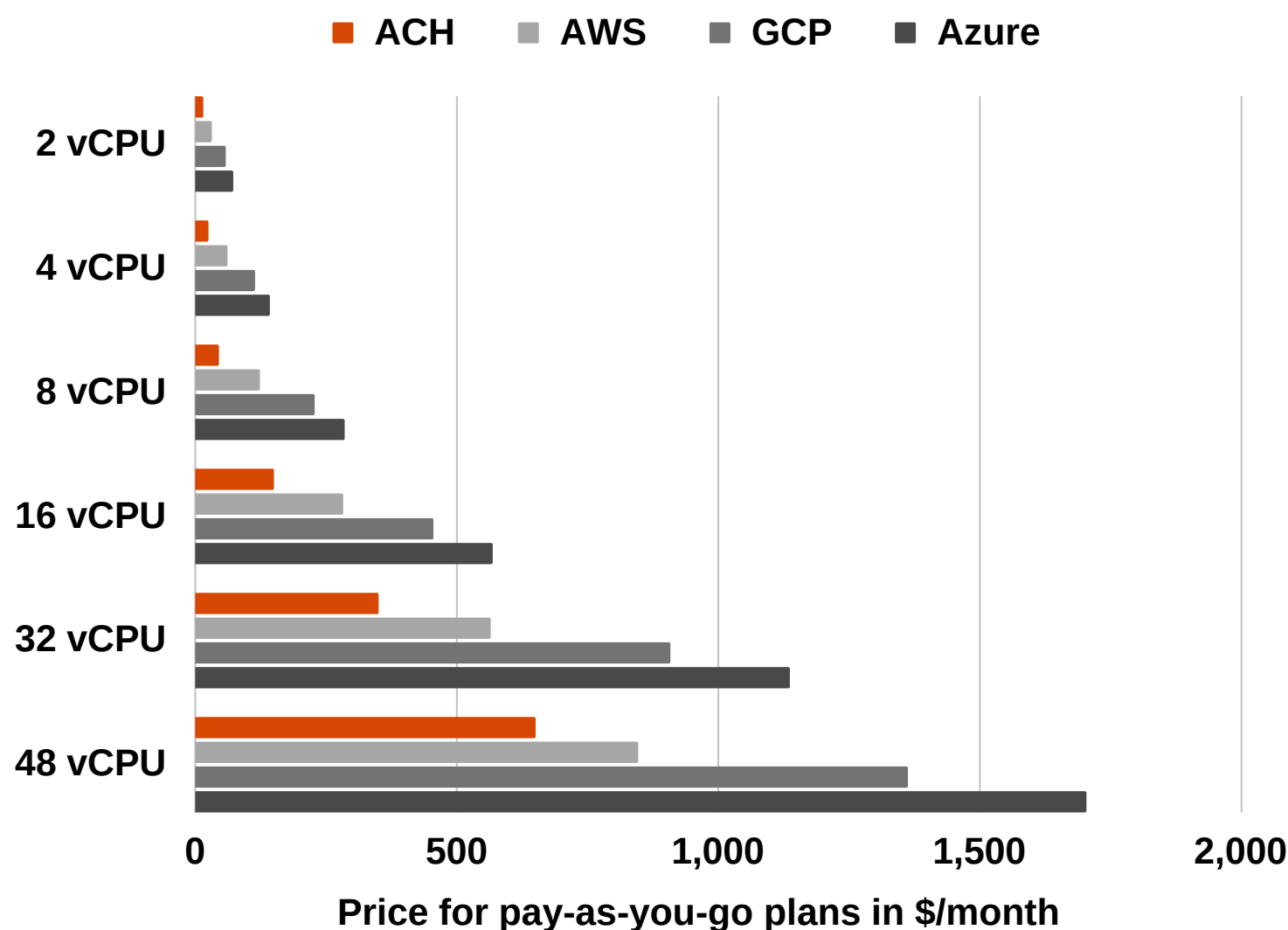
Listed below are some features offered by our public cloud:

- **Pay-as-you-go model** - With no hidden fees, you will only pay for what you use which you can view through an itemized invoice showing your consumption break up.
- **Flexible contract period** - You will be charged for the months that you use the services with the flexibility of stopping the services at any moment.
- **Free bundled services** - We add security groups, ensure DDoS protection, attach our powerful 64-bit AMD CPUs along with AMD EPYC to our high-performance servers.
- **Easy invoicing with adjustable plans**- You will receive only one invoice per project at the beginning of the month along with the flexibility to choose one of our easy and versatile plans to customize the resources on your cloud server which are invoiced hourly.
- **Secured payments** - We provide a secure payment solution that encrypts your credit card information, expiration date, and cryptogram during transmission to safeguard and ensure that no data is transmitted over the internet.

Cost comparison with other brands

The total cost of owning an infrastructure might seem equivalent or sometimes slightly lower than using public cloud services for setting up infrastructure for your business, but this is simply not true. The Total Cost of Ownership (TCO) of a private infrastructure also includes the cost of employing more workforce to manage that infrastructure and also the cost of replacing obsolete hardware, repair and maintenance, and lastly the not so pocket-friendly electricity bills of running servers and other hardware 24x7 for 365 days in a year. You can avoid all these expenses by leveraging the economical ACE public cloud services. Here's a graphical comparison of ACE public cloud's monthly plans with similar plans of some big players in the market.

The graph below shows cost comparison of ACE public cloud with AWS, GCP and Azure:



Our standard plan is priced at \$25/month, wherein we offer you a comparable set of resources (4 vCPU and 12 GB RAM), which is similar to the plans offered by the following brands. The below table clearly indicates that our price is 50% lower than the market leaders.

Cloud provider	vCPU	RAM	Price* (approx.)
Ace Cloud Hosting	4-core	12 GB	\$25/month
AWS	4-core	16 GB	\$61/month
Google Cloud	4-core	16 GB	\$113/month
Azure	4-core	16 GB	\$141/month

*Pricing data mentioned as of March 2022 for US region, taken from the respective websites of mentioned cloud providers and is subject to change.

Why choose ACE for your business?

Being an award winning commercial hosting provider, we also aim to provide the best prices in the segment with better quality of services and technology. We aim to disrupt the public cloud segment by offering more economical pricing to suit any budget. This will directly benefit the businesses by reducing their TCO of hardware while offering them a better and high-performance alternative to existing cloud solutions.

- Better resources offered at lower prices
- High compute uptime 99.99% SLA
- Lower TCO for your business
- Flexible billing and plans
- Effortless migration of data
- Easily scalable
- Pay-as-you-go pricing model
- Built on industry leading technology



Registered Address:

2969 Oneill Dr, Bethel Park, Pennsylvania, 15102-6602

2637 E Atlantic Blvd #1331 Pompano Beach, FL 33062, Florida

Call: +1-855-264-8722

www.acecloudhosting.com

Solutions Consultation: solutions@acecloudhosting.com

Media Queries: marketing@acecloudhosting.com